

Tams Creations⁺

Halloween 2007

Original counted cross stitch & blackwork designs.



Tams Creations



Tams Creations⁺

Page 2

Halloween 2007

Each decoration :

Stitches : 20 x 20
Size : 14 count : 3.6 x 3.6 cm
11 count : 4.6 x 4.6 cm

Materials : Aida or evenweave + 6 strand embroidery floss
Backing material such as cotton & sewing thread
Stuffing
Miscellaneous fun fur edging + ribbon

Note : ▼ = center markers.
Floss usage given for each chart is based on 2 strands on 14 count.

Instructions :

- ❖ Cut Aida or evenweave material 2cms all round larger than specified above.
- ❖ Embroider the design as per the charts.
- ❖ Cut one piece of backing material, eg: cotton, the same size as your embroidery.
- ❖ Either :
 - a) with right sides facing, sew around 3 sides, turn right side out, stuff & over-sew to close last side, or
 - b) with wrong sides facing, blanket stitch around 3 sides, stuff & blanket stitch round 4th side.
- ❖ Optional - Oversew a length of fun fur wool around the outside + a loop of 8cm of ribbon to hang decoration.





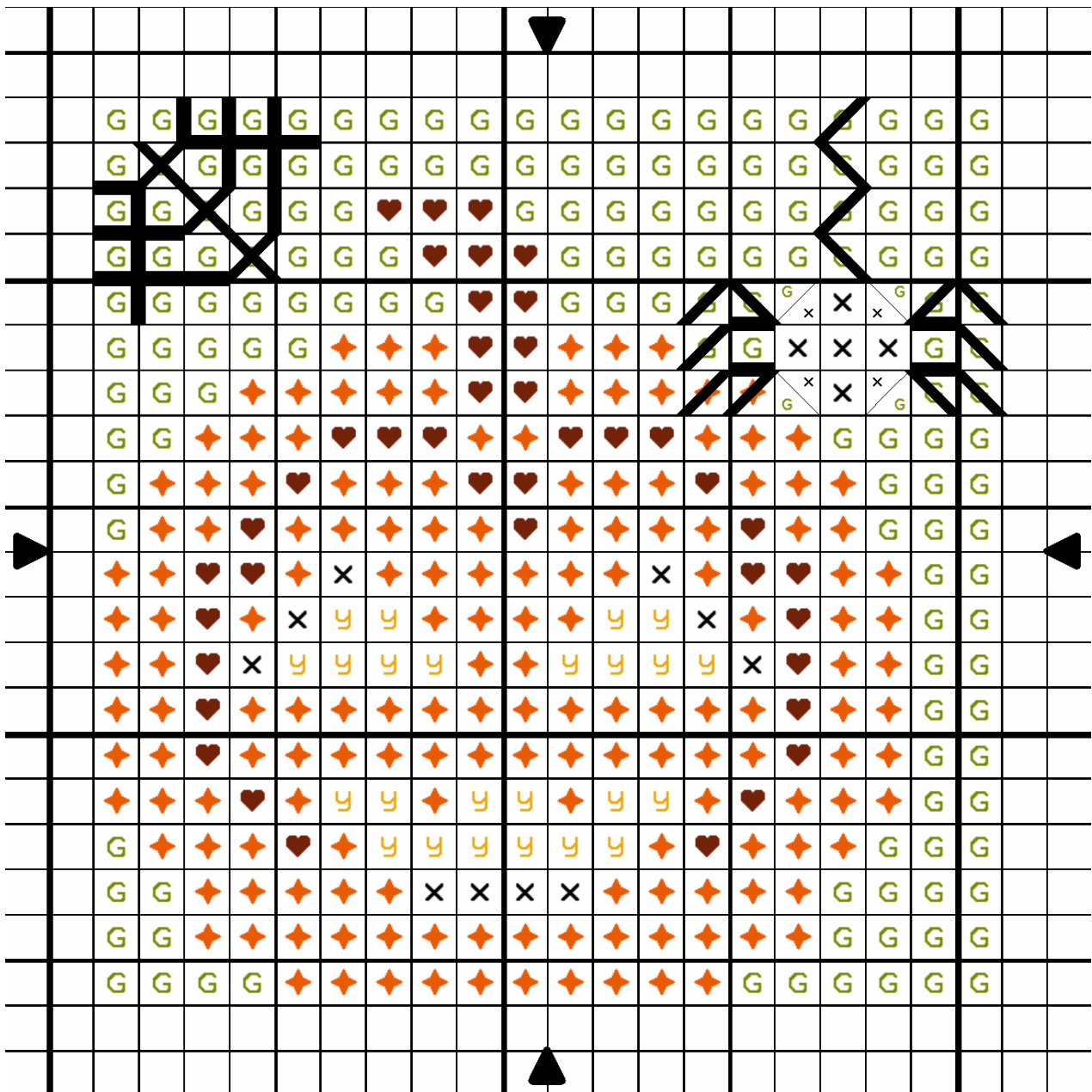
Tams Creations

Page 3

Halloween 2007

Stitches : 20 x 20
14 count : 3.6 cm x 3.6 cm

G	Forest Green med	DMC 906	0.61 m
y	Topaz	725	0.11 m
◆	Tangerine dk	740	0.59 m
♥	Red Copper dk	918	0.17 m
x	Black	310	0.13 m
-	Backstitch : black		





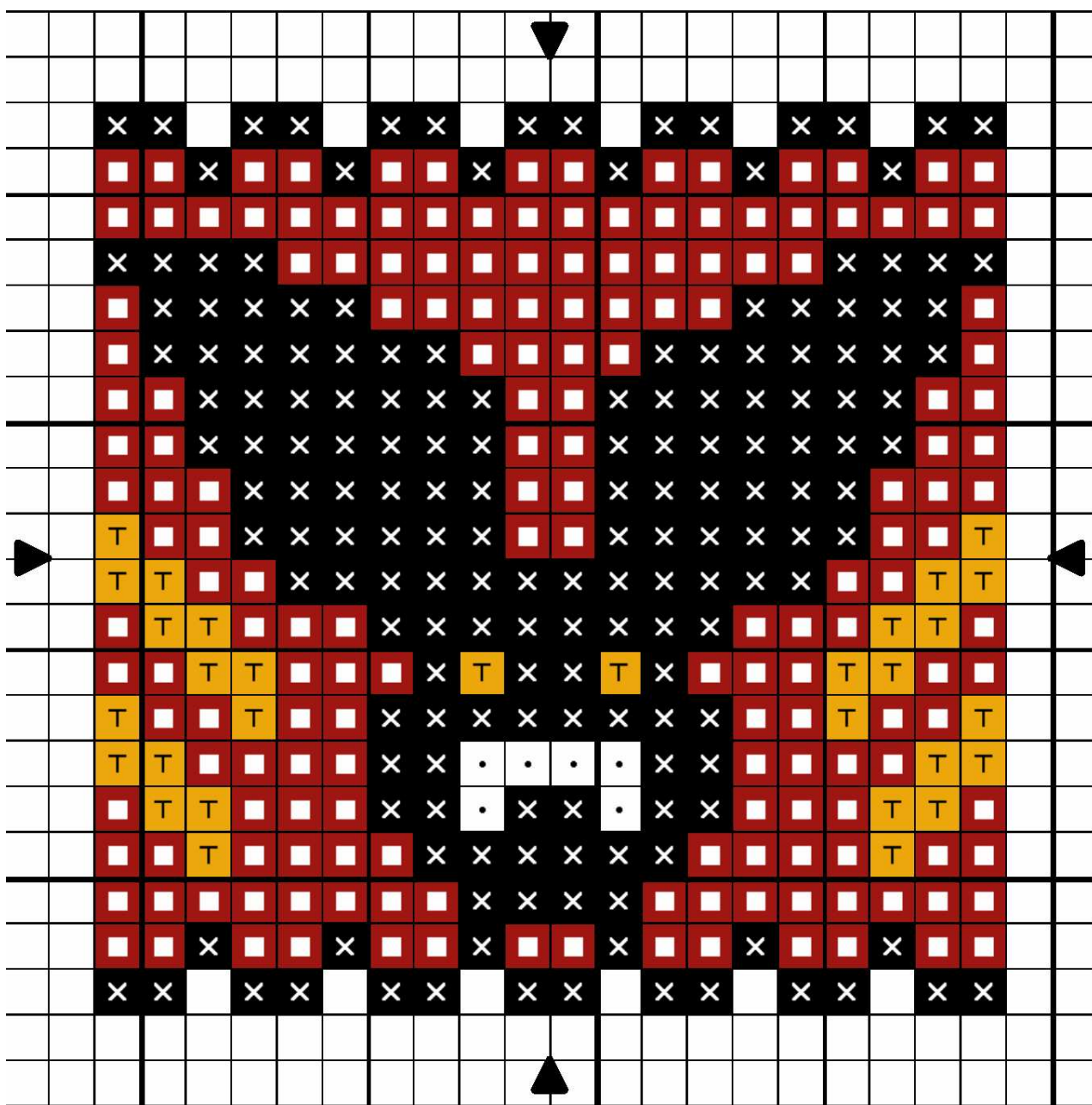
Tams Creations

Halloween 2007

Page 4

Stitches : 20 x 20
14 count : 3.6 cm x 3.6 cm

	Coral dk	DMC 349	0.65 m
	Topaz	725	0.14 m
	White bright	B5200	0.05 m
	Black	310	0.65 m





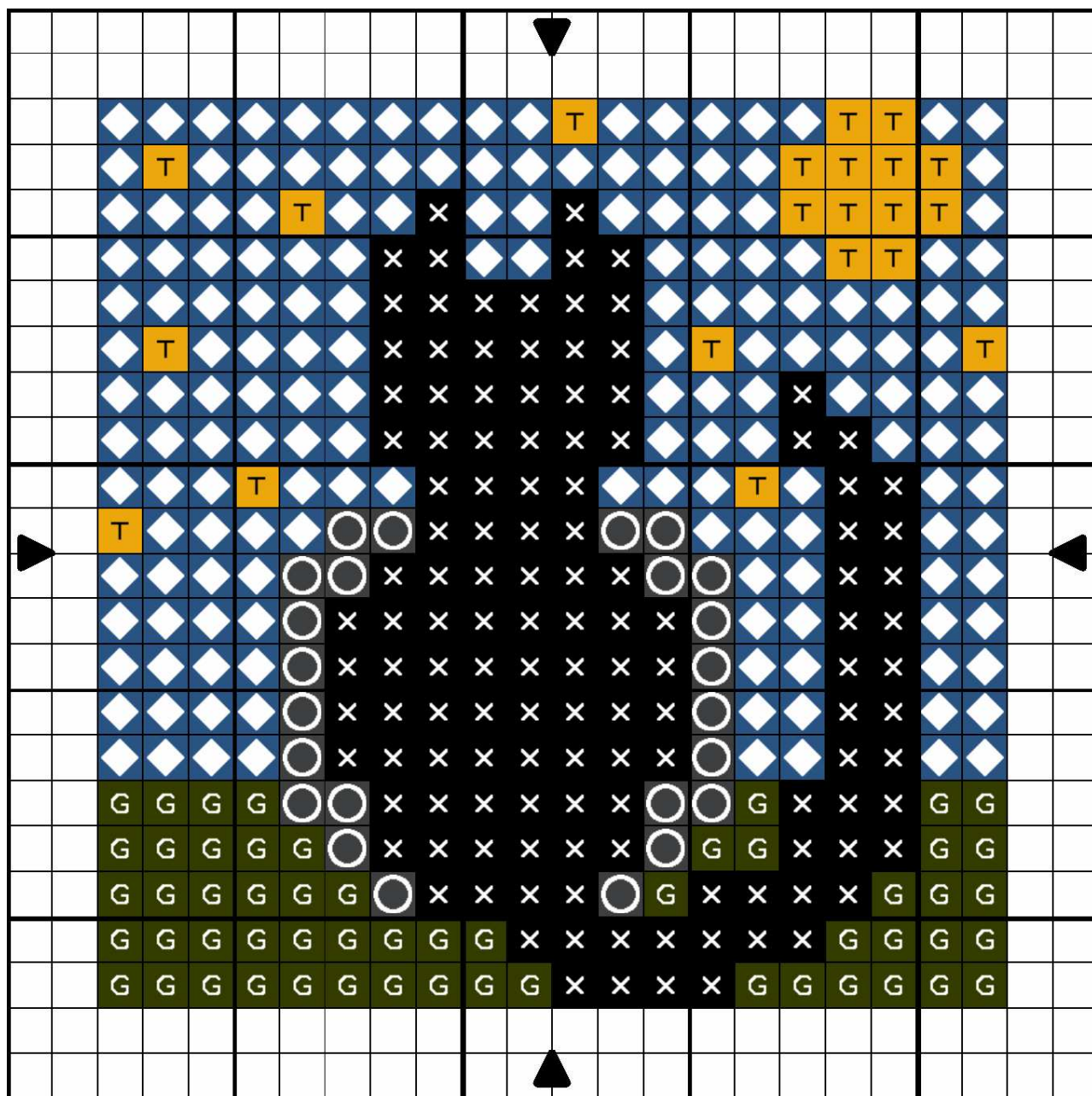
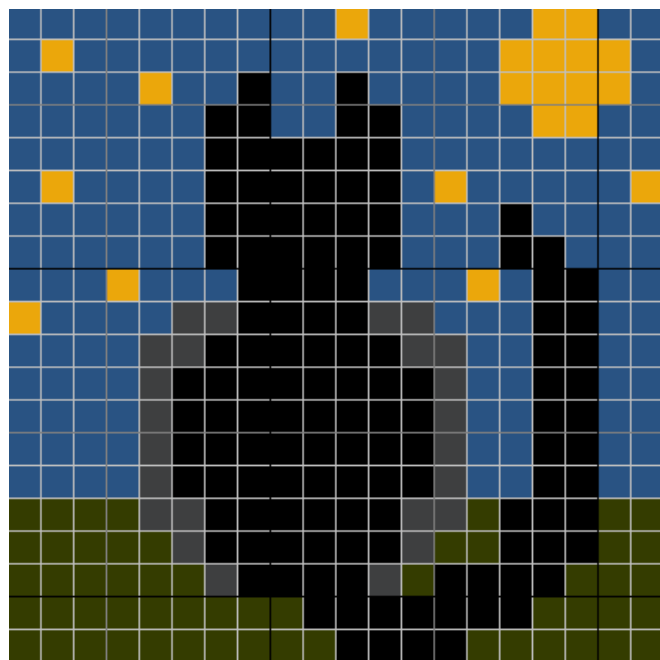
Tams Creations

Page 5

Halloween 2007

Stitches : 20 x 20
14 count : 3.6 cm x 3.6 cm

	Forest Green vy dk	DMC 904	0.22 m
	Topaz	725	0.10 m
	Pewter Grey	317	0.11 m
	Black	310	0.49 m
	Night blue	312	0.63 m





Tams Creations

Page 6

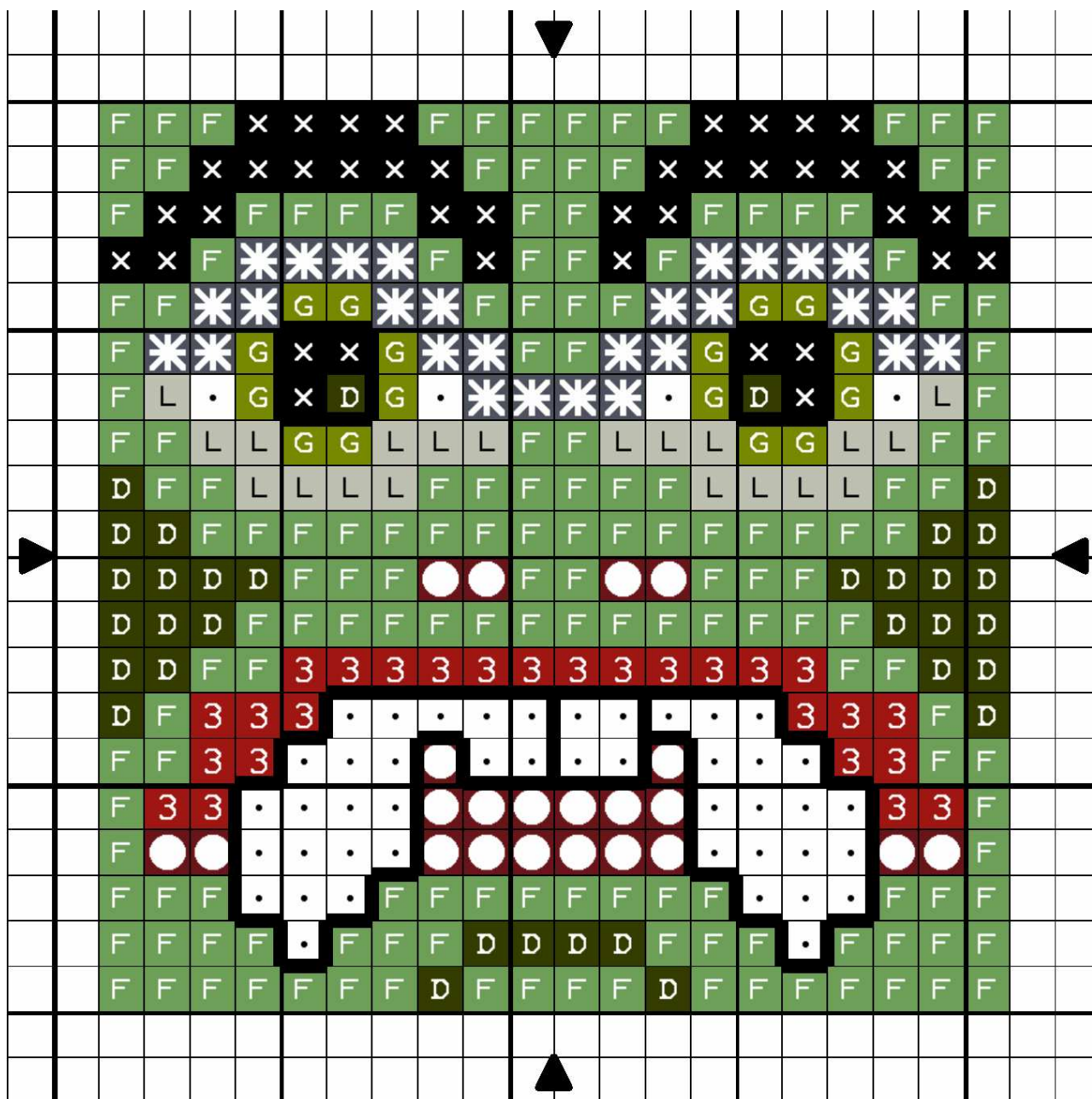
Halloween 2007

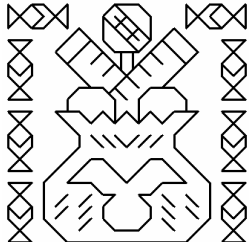
Stitches : 20 x 20

14 count : 3.6 cm x 3.6 cm

3	Coral dk	DMC 349	0.12 m
G	Forest Green med	906	0.11 m
D	Forest Green vy dk	904	0.20 m
.	White bright	B5200	0.22 m
x	Black	310	0.25 m
●	Cherry red	815	0.11 m
F	Fresh green	702	0.61 m
L	Light grey green	524	0.10 m
✱	Anthracite grey	3799	0.13 m

Backstitch : black





Tams Creations

Halloween 2007

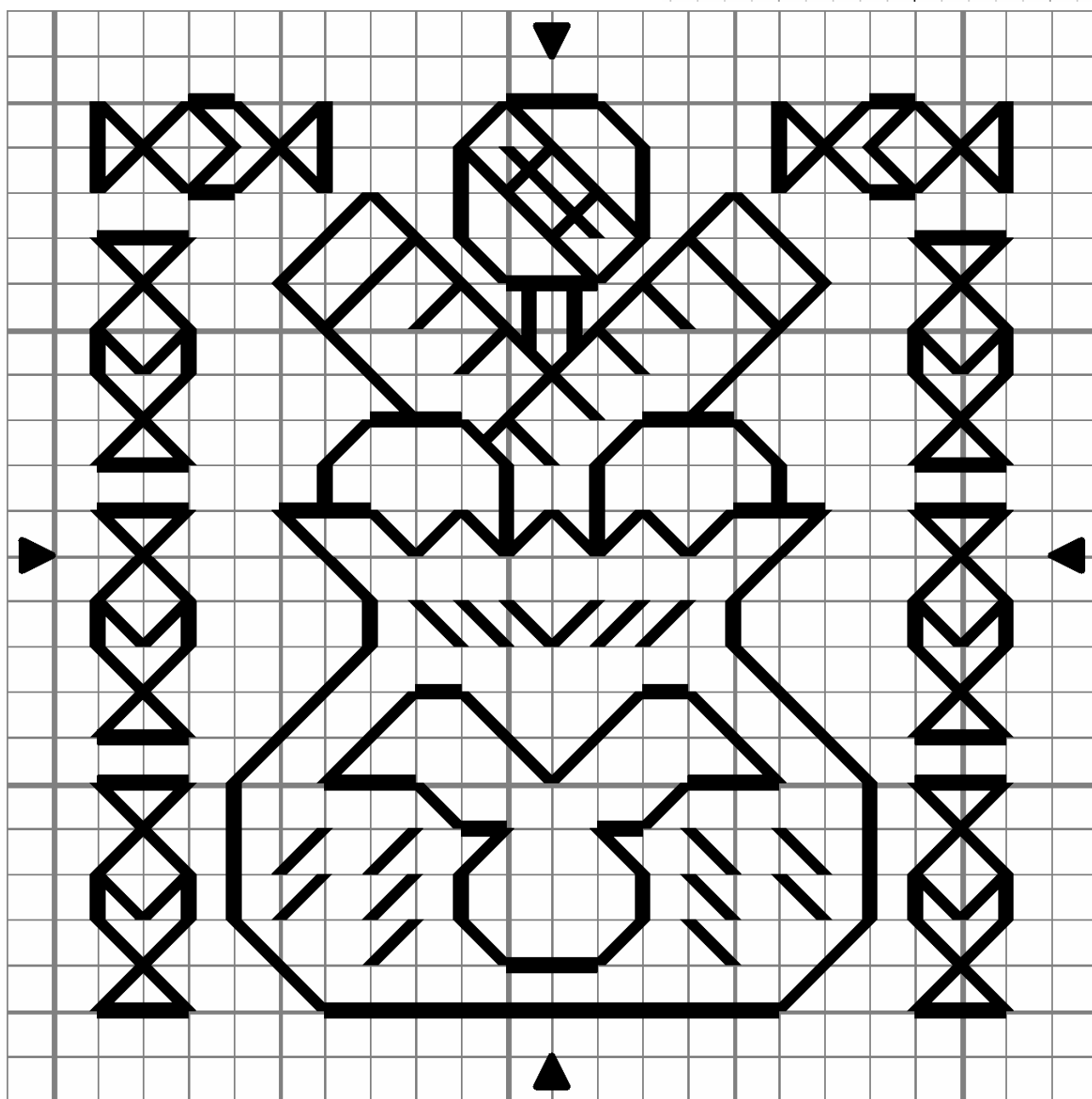
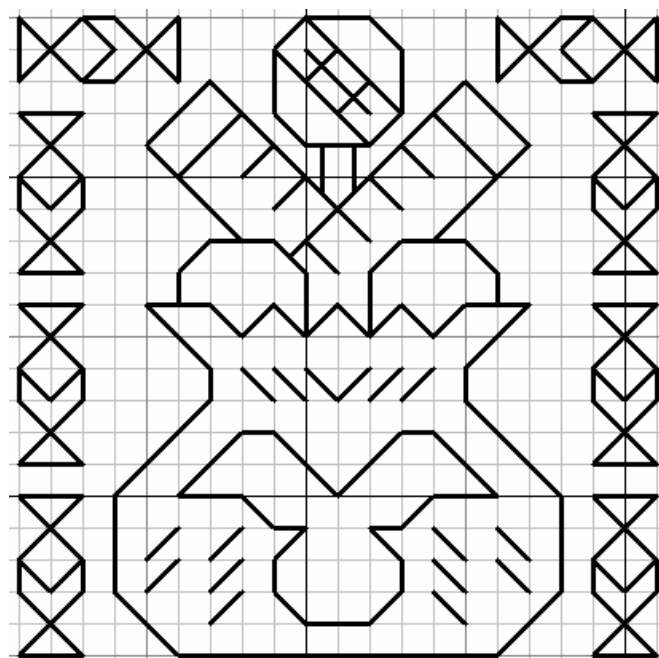
Page 7

Stitches : 20 x 20
14 count : 3.6 cm x 3.6 cm

Backstitch

DMC

Black 310 0.27 m



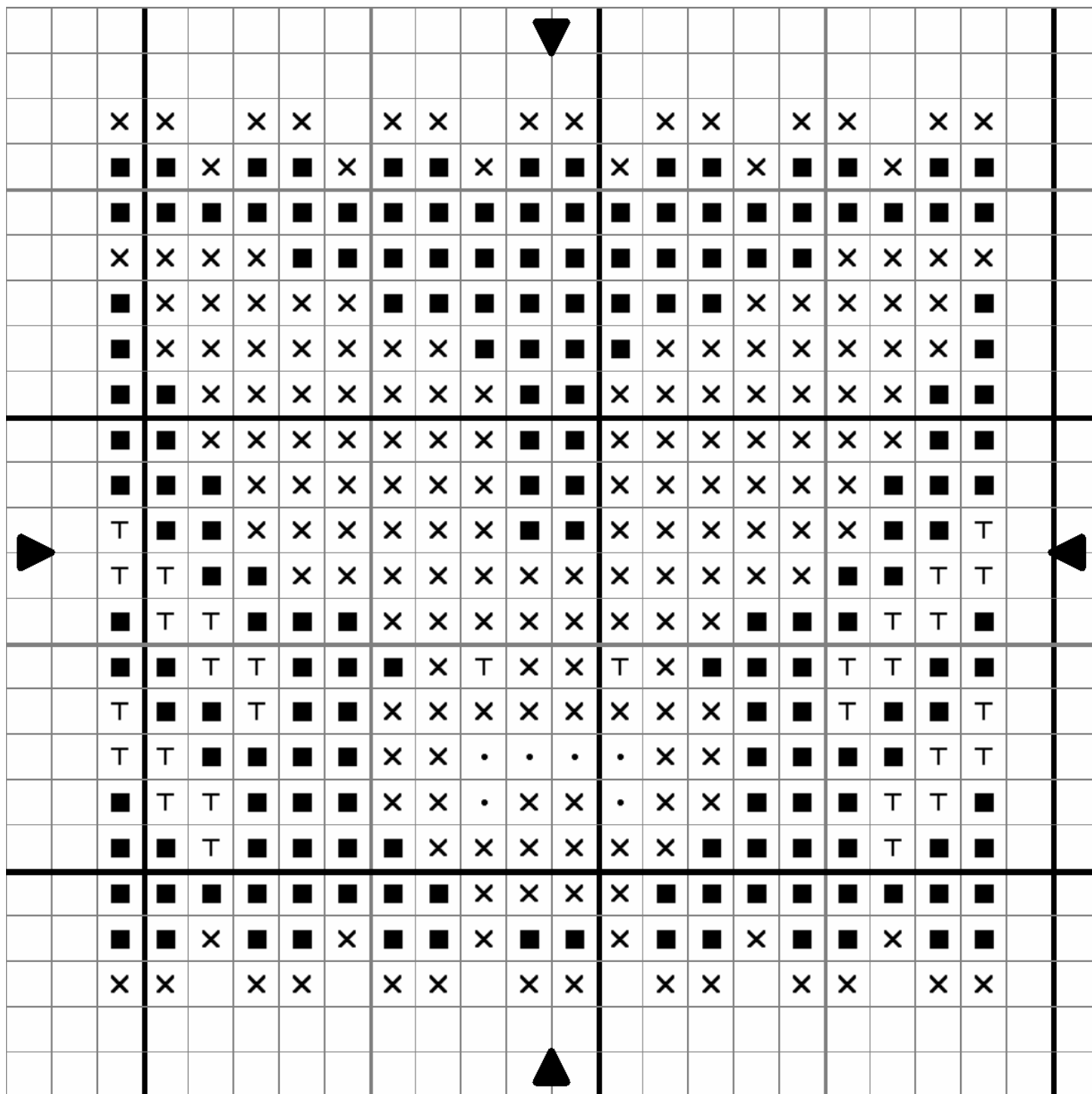


Tams Creations

Halloween 2007

Stitches : 20 x 20

14 count : 3.6 cm x 3.6 cm

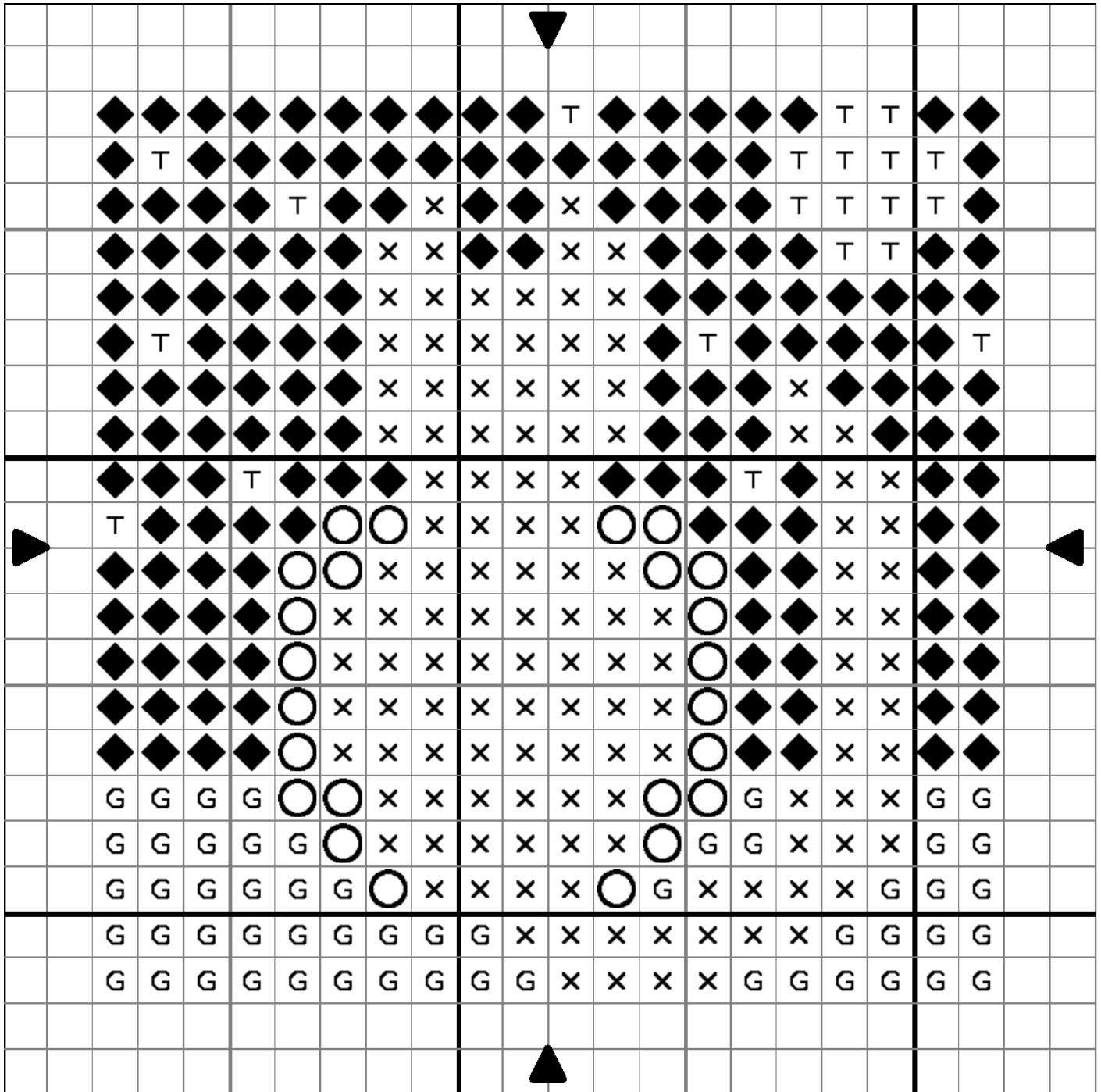


		DMC	
■	Coral dk	349	0.65
T	Topaz	725	0.14
•	White bright	B5200	0.05
x	Black	310	0.65

Tams Creations

Halloween 2007

Stitches : 20 x 20
14 count : 3.6 cm x 3.6 cm



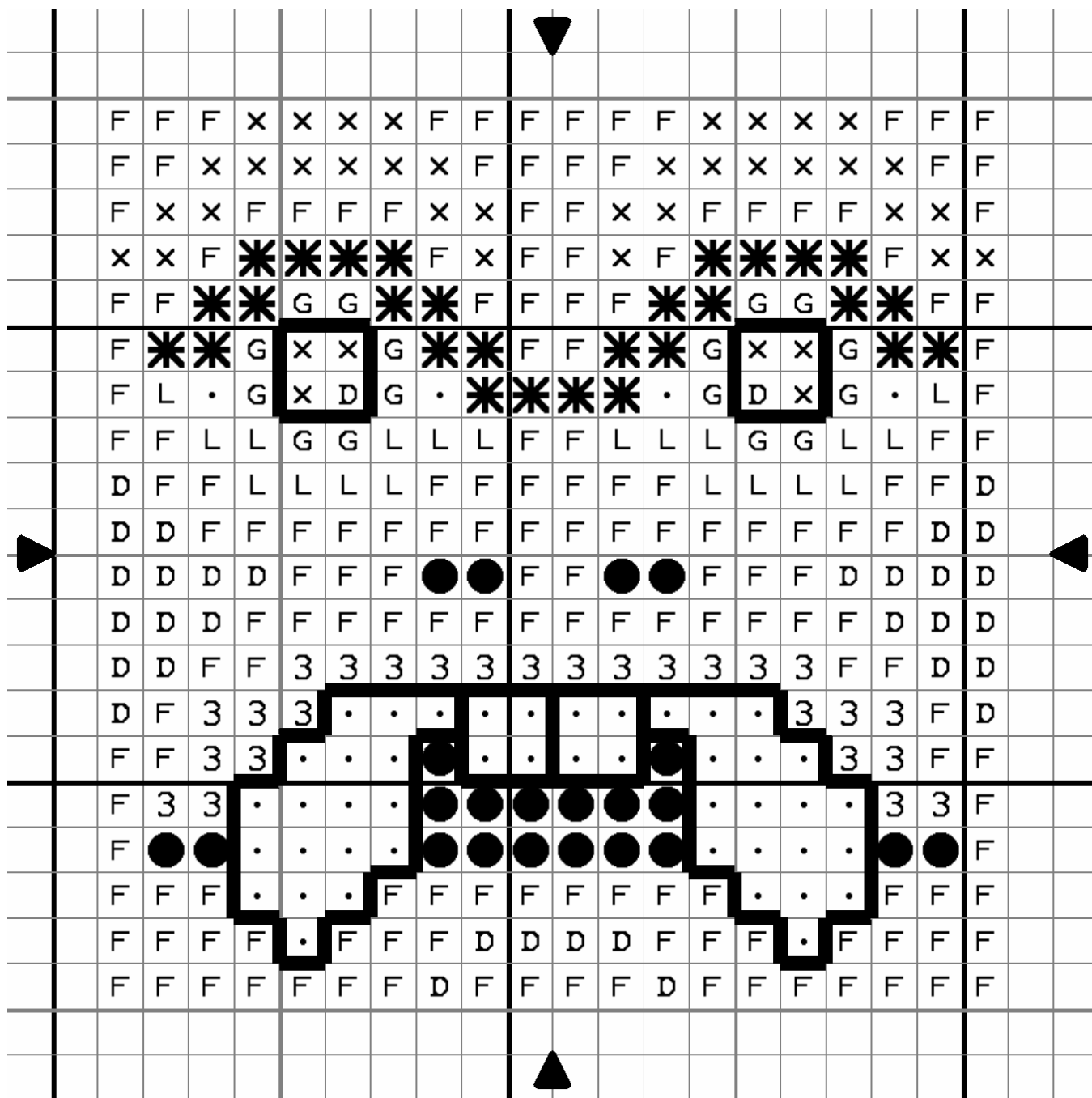
		DMC	
G	Forest Green vy dk	904	0.22
T	Topaz	725	0.10
○	Pewter Grey	317	0.11
x	Black	310	0.49
◆	Night blue	312	0.63

Tams Creations

Halloween 2007

Stitches : 20 x 20

14 count : 3.6 cm x 3.6 cm



DMC

3	Coral dk	349	0.12 m
G	Forest Green med	906	0.11 m
D	Forest Green vy dk	904	0.20 m
.	White bright	B5200	0.22 m
x	Black	310	0.25 m
●	Cherry red	815	0.11 m
F	Fresh green	702	0.61 m
L	Light grey green	524	0.10 m
*	Anthracite grey	3799	0.13 m

Backstitch

Black

310

0.25 m to be sold. © Tams Creations - All rights reserved